



# The Round Hayling Rowing Race

Sunday 27<sup>th</sup> June 2021



**SUNDAY 27<sup>TH</sup> June the Round Hayling 'Flag' Rowing Race** will take place around the Island along the Course shown in Blue. The Start and Finish will be in the New Cut on the North Side of the Hayling Island, proceeding in an anti-clockwise clockwise direction around the Island. It will be run as a single race with time handicaps for different classes of boat.

The 13-mile course takes around 2-2.5 hours to complete for Gigs and Galleys - the record time is 2 hours 6 minutes set by Weymouth Gig Club in a Pilot Gig; 2 hours 9 minutes by Langstone Cutters in a Solent Galley.

**Entry Fees:** There is a charge of £12 per rower entering the Round Hayling in order to provide the Safety and Support Boats. Payment is via a from available on the Website, or on the day, at the Coastal Rowing Hub Clubhouse.

**All boats must carry a flag of at least 2'x4' and take a working VHF radio (Channel 8).**

High Water Chichester Bar 14.30 (4.7m);

10.30 Coxswains Briefing.

Race Handicap latest starting times (to be confirmed on the day):

11.00 Claydons & Whalers  
12.20 St Ayles Skiffs & Skerries  
12.30 Jolly Boats and other 4 oared boats  
12.55 Solent Galleys & Celtic Longboats  
13.00 Cornish Pilot Gigs

Race finishes around 16.00. Boats recovered or moored up and crews off the water 17.00.

Presentations: 17.00. This year Langstone Adventure Rowing has extended the Awards of an Adventure Shield to crews of traditional, fixed seat boats for:

- |                             |                                    |
|-----------------------------|------------------------------------|
| 1. 'First Across the Line'  | 7. Fastest Cornish Pilot Gig       |
| 2. Fastest Round the Island | 8. Fastest St Ayles Skiff          |
| 3. Fastest Ladies           | 9. Fastest Solent Galley           |
| 4. Fastest Vets Crew (50+)  | 10. Fastest Bursledon Gig          |
| 5. Fastest Supervets (60+)  | 11. Fastest Thames Waterman Cutter |
| 6. Juniors (Under 18)       | 12. LAR Sportsman's Trophy         |

In 2019 we are also inviting Offshore Rowing Coxed Quads to take part as a trial.

***Alternative route:***

***In the event of high winds, the Hayling sea front can become impassable at either end to rowing boats. An alternative route, shown in Red, may be used. The Handicap start times will be revised according to the length of the revised course***



# The Round Hayling Rowing Race

Sunday 27<sup>th</sup> June 2021



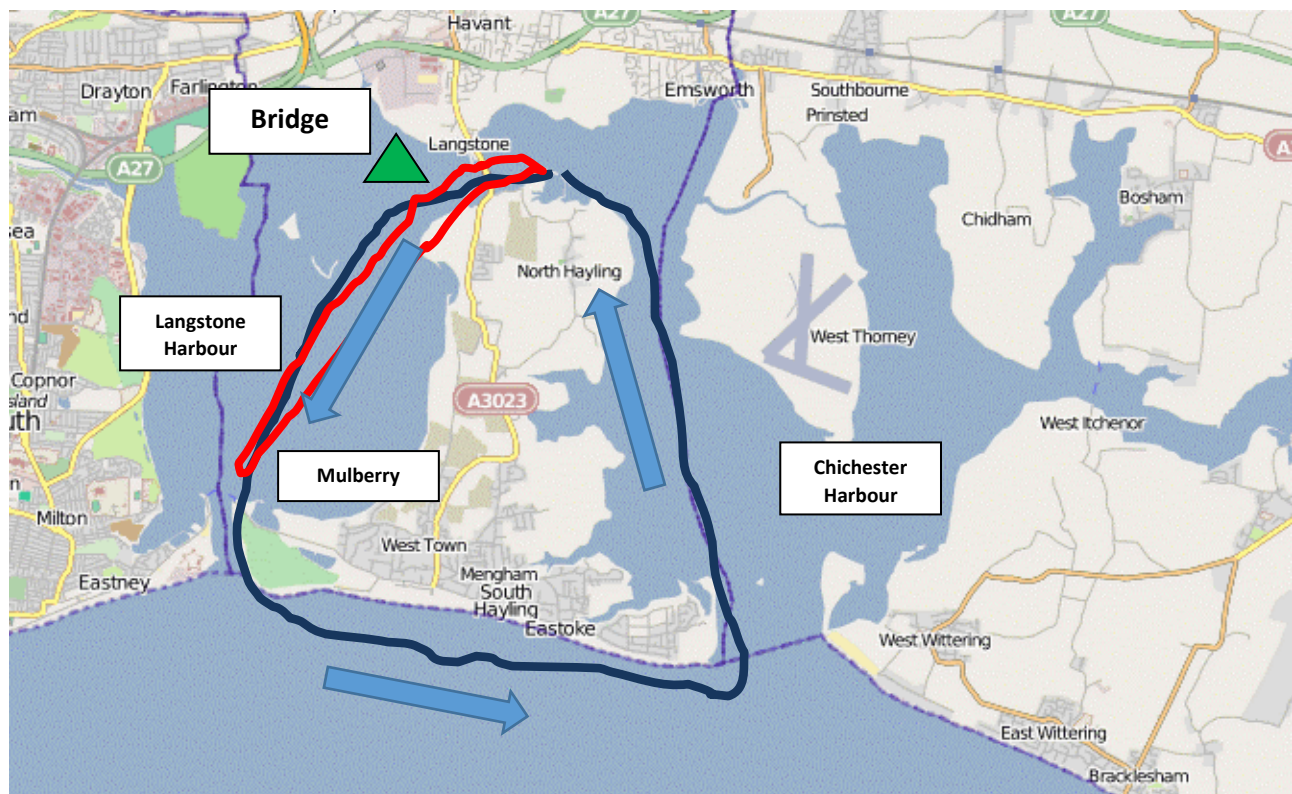
**Course Hazards:** On leaving the New Cut at the start crews may proceed anti-clockwise around the island in pursuit of the fastest time. Hazards include:

**BRIDGE:** A passage under the Hayling Island Road Bridge, followed by a single narrow passage through the disused railway bridge means boats will start in a) Groups of the same Class; b) 1 minute apart.

**TO AVOID RISK IN THIS AREA RACING WILL ONLY START AT THE GREEN TRIANGULAR BUOY MARKED 'BRIDGE' 100 METRES TO THE WEST OF THE BRIDGES. ANY CREW OVERTAKING BEFORE THIS POINT WILL BE DISQUALIFIED.**

Cardinal, Marker Buoys and Marker Posts indicating Channel positions and hazards – competitors are recommended to stay between the red and green markers in order to avoid risk of grounding on tidal Salting's and mudbanks.

Moored yachts: To the North of the both Harbour entrances are lines of buoys and moored boats.





# The Round Hayling Rowing Race

Sunday 27<sup>th</sup> June 2021



A shallow, unmarked, sand bank to the NE of the wrecked Mulberry in Langstone Harbour is a hazard – Crews can pass either side of the Mulberry without disqualification, always ensuring you regain the main channel thereafter.

Tide races at the junction of the Harbour entrances – choppy water can result from certain wind/tide conditions. At the Exit to Chichester Harbour there will be 2 x buoys indicating the route to take – close to the red hazard Baskets, ensuring you do not head south over the Bar Sands.

Fishing Lines; when hugging the shore, beware of long fishing lines – advise fishermen of your approach if possible.

Rock and wooden Groyne along the sea front – stay seaward of all the red 'basket' Groyne markers.

**Course participants:** All Coxswains must be over 18 years. Under 18's must wear a life jacket or buoyancy aid; no one may take part under 14 years old.

**Safety:** All the Marshals and Safety boats are volunteers, so please respect them and the advice they give regarding safety and risk management.

**On the Water:** The coordinating wet-side manager will be Mike Gilbert mobile 07767 350 512. All crews will carry a VHF radio tuned to Channel 8 for communication purposes.

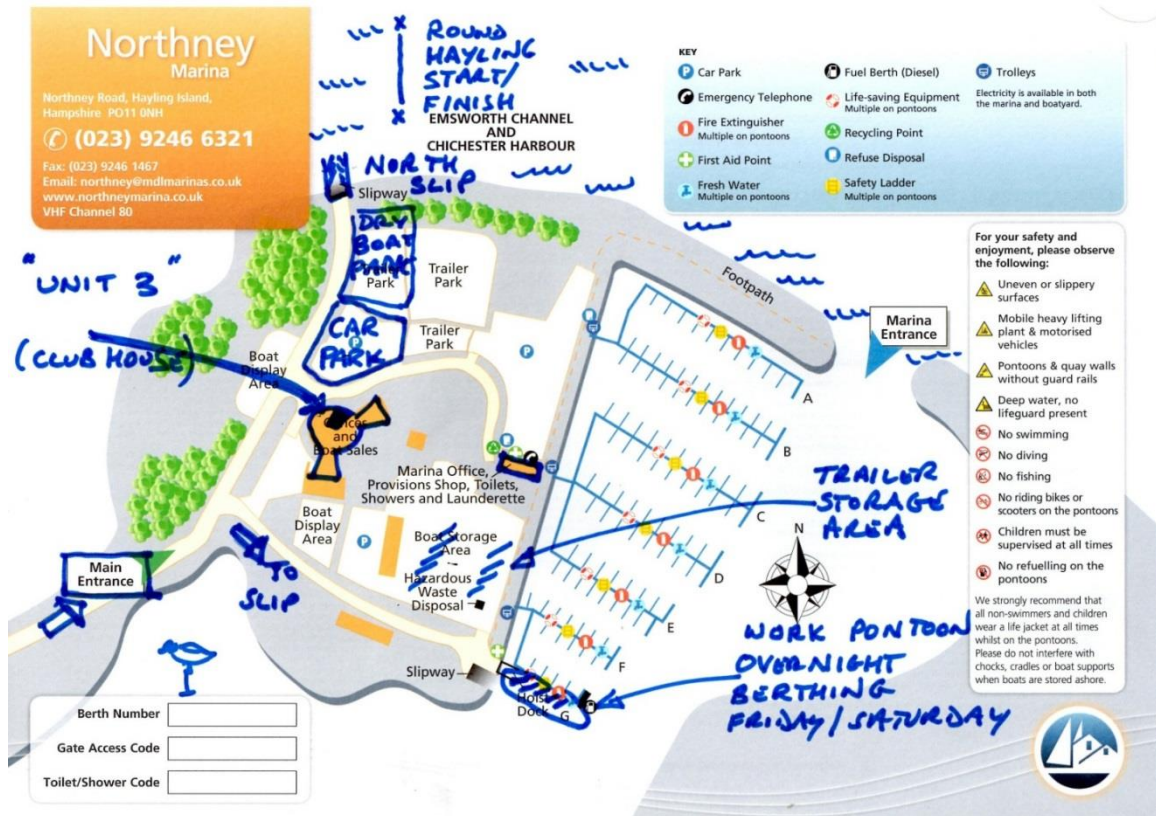


# The Round Hayling Rowing Race

Sunday 27<sup>th</sup> June 2021



**On the Shore:** The venue is Northney Marina; Hayling Island PO11 0NH; 023 92 469246. Free parking, showers and toilets are on site.



**Arrival and Departure:** Boats and crews can arrive from Friday 25<sup>th</sup> June at the Marina. The coordinating Shore Manager will be based in the Coastal Rowing Hub Clubhouse can be used for a meeting point, shelter and storage.

Launching sites include: a) Public Slipway within the Marina Complex using the trailer to launch/recover or b) With 'dollies' off the North Shore Slip adjacent Langstone Cutters Gig Club Operations/ Coastal Rowing Hub. Trailers can be stored in the boat standing area adjacent the public slip.

There is a secure Dry Boat Park where boats/trailers can be left overnight.

Boats that are participating in the Cornish Pilot Gig regatta on Saturday 26<sup>th</sup> and staying on site for use on Sunday 27<sup>th</sup> can be left afloat; berthed on the 'work' Pontoon in the Marina. Or returned to trailers and stored in the Marina area.



# The Round Hayling Rowing Race

Sunday 27<sup>th</sup> June 2021



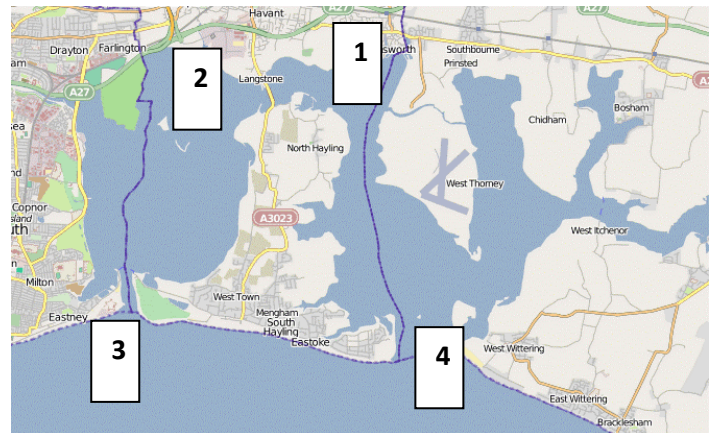
**Safety Plan:** In 2021 the safety support arrangements have changed, and Support Boats will be positioned at:

1. The Start;
2. Bridge Buoy in Langstone Harbour.
3. Off the Winner and by
4. Off Bar Sands, HISC;

RIBS will also lead the first main group away & follow the main groups of boats.

All boats must carry a working VHF radio and a radio check will be carried out at the start.

**Any boat without a working VHF radio will not be allowed to start.**



Clubs are requested to ensure that the coxswain is a competent Off-shore Cox capable of handling the crew and boat in the rough waters that can be experienced along the Hayling Sea Front.

**All Coxswains must wear a lifejacket, and all crews must have a life jacket or buoyancy aid available IN THE BOAT – The Safety Officer may require them to be worn on the Sea Front Leg if the wind exceeds F4.**

**If the forecast and assessed seafront conditions are deemed excessive; Plan B Route will be applied.**

**The Start:** Boats will be set off in Handicapped groups, at 1-minute intervals. No overtaking before the Green Buoy marked 'Bridge' after passing through the gap in the disused railway bridge supports.

